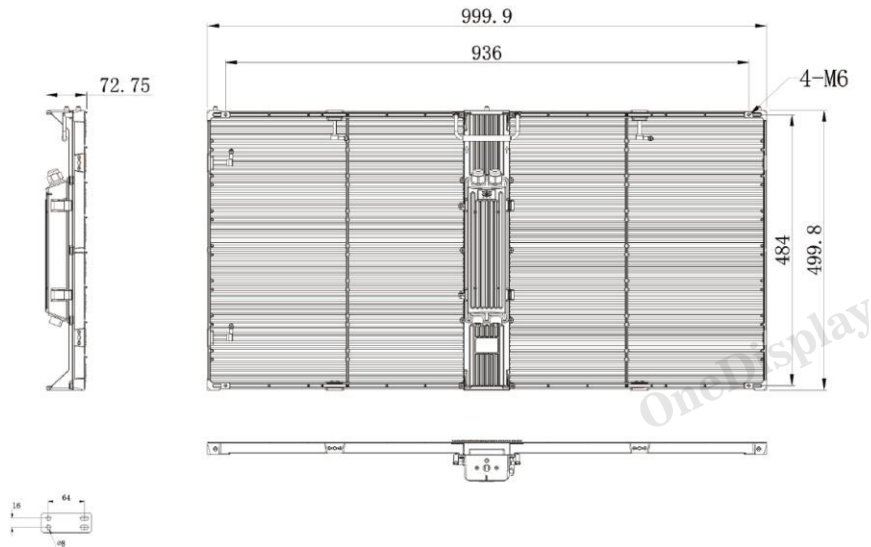


**O-ICE /** SERIES

## **GOB Outdoor/Indoor Transprent**

Led Display (Rental&Fixed)



## Parameters

### SPECIFICATION

Pixel Pitch	3.9–7.81mm
Encapsulation brand	NationStar
LED lamp bead model	SMD1921
Pixel composition	1R1G1B
Moudle Reslution(W*H)	128*16
Moudle Size(W*H)	500x125mm
Moudle Fixed Way	Front Access (Screw)
Panel Reslution(W*H)	256x64
Panel Size(W*H*D)	1000x500x72.75mm
Module Arrangement(W*H)	2X4
Panel Weight (kg/panel)	5.5kg
Panel Material	Die casting Aluminum
Flatness between modules	≤0.1mm
Maintenance Way	Front & Rear
Density of Pixel (dots/m2)	32768
Brightness(cd/m2)	2500/4500
Viewing angle	160°/160°
Transparency rate	55%/72%
Contrast	3000:1
Protection level	Ip65
Gray scale	16bit
Chromaticity uniformity	±0.003 within Cx,Cy
Driving method	1/4Constant current drive
Frame change frequency	60 f/s
Refresh rate	1920/3840
Color temperature	2000K~9500K
Operating platform	Windows XP /7/8/10
Signal Input	HDMI、DVI
Operating Voltage	AC: 110V~240V、50~60Hz
Maximum Power (W/m2)	800
Average power (W/m2)	293
Continuous working time	≥7×24hrs
Service life	100000Hours
Operating environment	-20℃~60℃ 10%~90%RH





**GOB High Protection Transparent LEDisplay (Pioneer of GOB craft in the screen industry)**

O-ICE series is The First One and the Only One who can make transparent led IP65 and Anti-Crash.

OneDisplay

### Remarkable Visual Performance

Selecting ultra high refresh rate IC and high quality Led Chip.high-contrast, huge viewing angle, wide color gamut, anti-glowing, replay the remarkable visual performance.

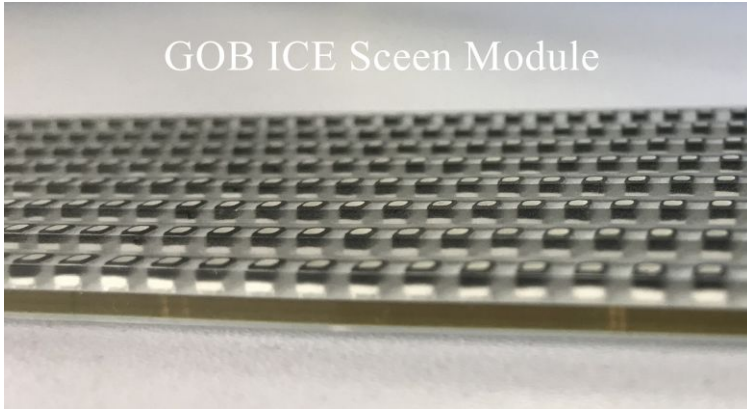


### High protection Strong Patent

GOB(Glue On Board) Technology, the Whole Module is sealed by our Unique Patent Glue, Moisture and Water won't hurt the LEDs and Electronic Components any more, more opportunities than others on LED Screen Business.

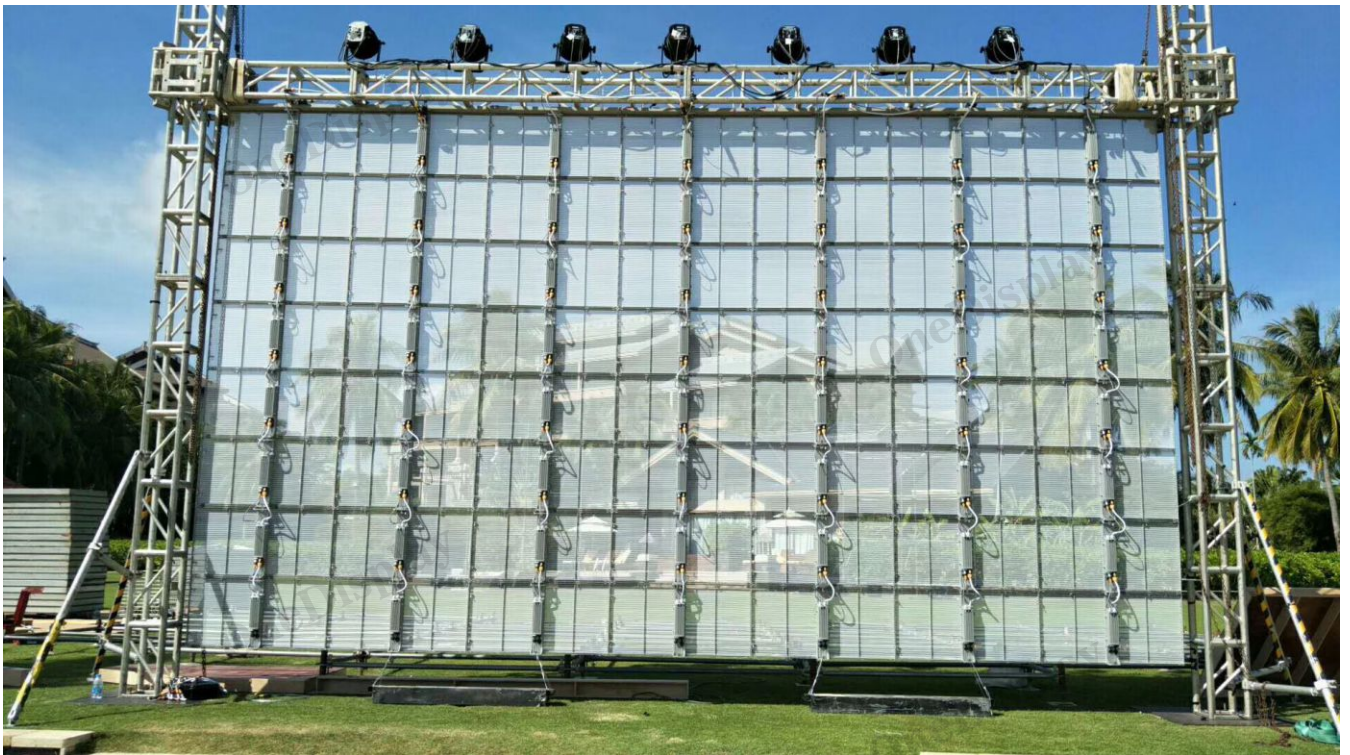


GOB ICE Screen Module



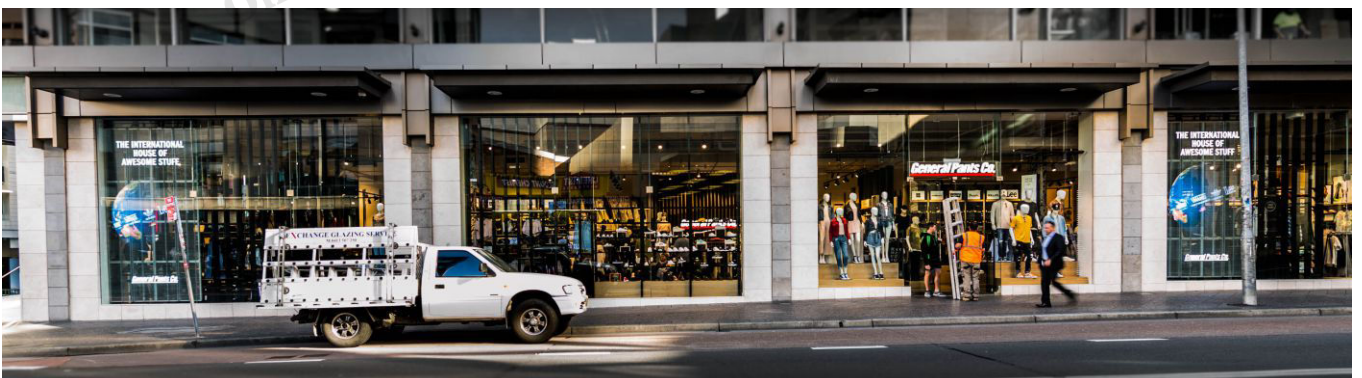
## Anti-Crash

No need for Acrylic glass, save more money, GOB Technology can Reduce rate of Dead Pixels during transportation and installation, less maintenance cos.



## Anti-UV & Dustproof

GOB Technology can protect LEDs from damage of UV, Keep the LED away from dust, reduces ageing speed, the screen can live longer than before, just wipe the surface with a cloth, nothing more.







### Higher transparency Stronger in support

Die-cast aluminum frames with hollow design parallel to the led strips, which could give high precision seamless assemble, lighter weight.



### Matt GOB Surface

Matt GOB surface for stage Rental application, maximum reduce lighting reflection.

LED Screen Manufacturer in China



## One Display Limited

Office Number: +86 755-29949922

Phone/Whatsapp: +86 136-32789913

Email: [info@onedisplaygroup.com](mailto:info@onedisplaygroup.com) /  
[marketing@onedisplay.net](mailto:marketing@onedisplay.net)

Factory Address: No.1 Dayang 2nd Road,  
Guangming New District, Shenzhen 518132