



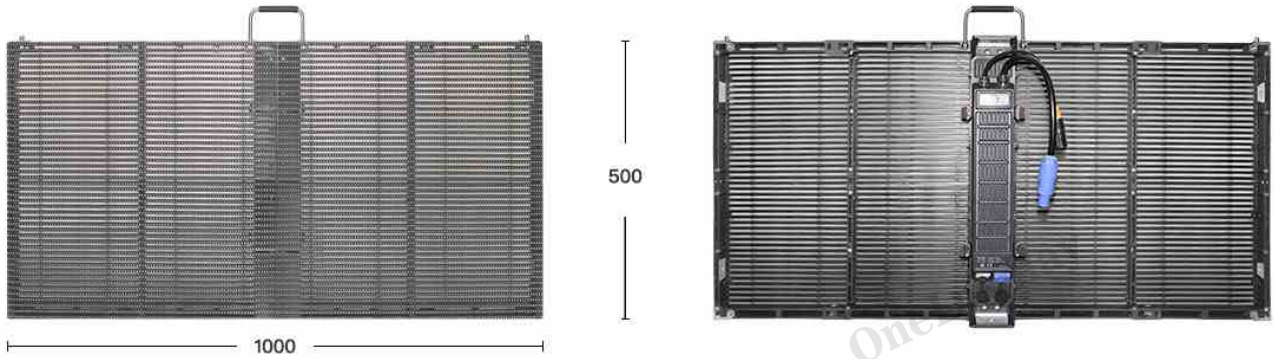
O-Crystal / SERIES
Outdoor transparent
Led Screen

OneDisplay



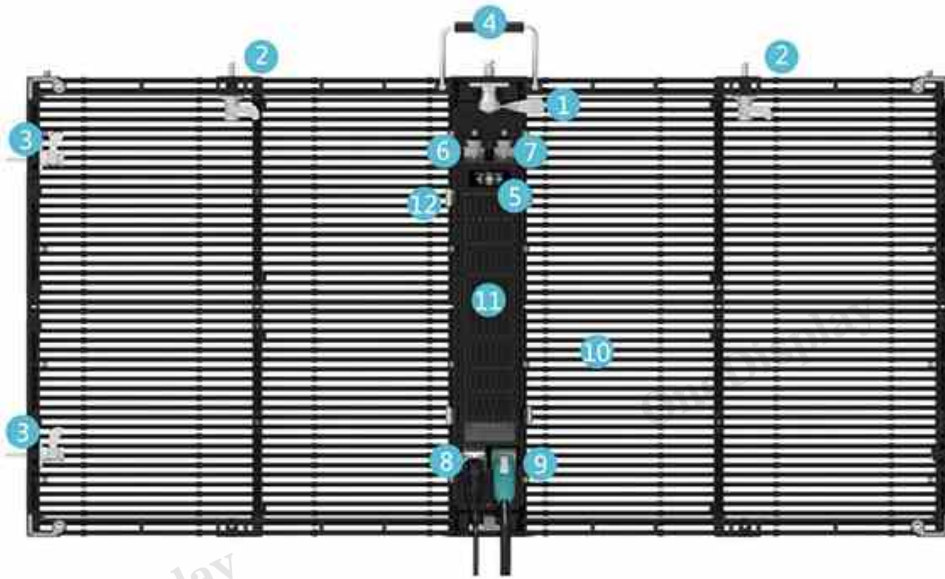
www.onedisplaygroup.com

One Display Limited



Parameters

SPECIFICATION				
Pixel Pitch	3.9–7.8mm	5.2–10.4mm	10.4mm	15.6mm
Encapsulation brand	NationStar			
LED lamp bead model	SMD1921	SMD1921	SMD2727	SMD2727
Pixel composition	1R1G1B			
Module Reslution(W*H)	128x32 dot	96x24 dot	48x24 dot	32x16 dot
Module Size(W*H)	500x250mm			
Module Fixed Way	Front & Real Access (Screw)			
Panel Reslution(W*H)	256x64 dot	192x48 dot	96x48 dot	64x32 dot
Panel Size(W*H*D)	1000x500mm			
Module Arrangement(W*H)	2x2			
Panel Weight (kg/sqm)	15kg			
Panel Material	Aluminum Die-casting			
Flatness between modules	≤0.1mm			
Maintenance Way	Rear Access			
Density of Pixel (dots/m2)	32768	18432	9216	4096
Brightness(cd/m2)	4500	4500	4500	6500
Viewing angle	140°/140°			
Transparency rate	55%	58%	58%	72%
Contrast	6000:1			
Protection level	Ip65			
Gray scale	14bit			
Chromaticity uniformity	±0.003 within Cx,Cy			
Scan mode	1/8	1/4	1/2	Static
Frame change frequency	60			
Refresh rate	<3840			
Color temperature	2000K~9500K			
Operating platform	Windows XP /7/8/10			
Signal Input	HDMI、DVI			
Operating Voltage	AC: 110V~240V、50~60Hz			
Maximum Power (W/m2)	800			
Average power (W/m2)	240			
Continuous working time	≥7x24hrs			
Service life	100000Hours			
Operating environment	-40℃~60℃ 35%~85%RH			



- | | | | |
|--------------|---------------------------|--------------------------|----------------------|
| 1. Main Lock | 4. Handle | 7. Power Output Air-plug | 10. Module |
| 2. Mate Lock | 5. Signal Light | 8. Signal Input | 11. Power Supply Box |
| 3. Edge Lock | 6. Signal Output Air-plug | 9. Power Input | 12. Power Snaps |

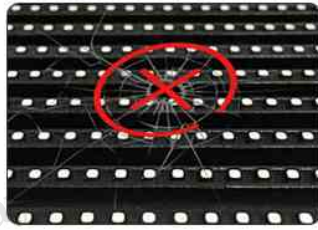
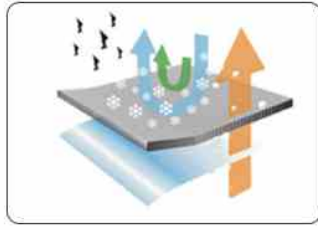
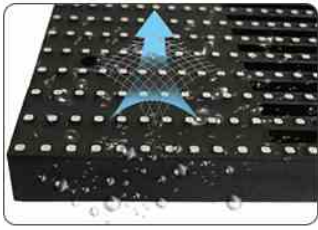
Product Features:

- Full LED encapsulation, IP65 Waterproof Dustproof Anti-collision.
- 60%–95% transmittance, seamless connection.
- Super slim and slight, easy window installation.
- Energy conservation, material heat dissipation.
- Neat frame, front and rear access.
- Stacking, Hoisting installation.



LED design:

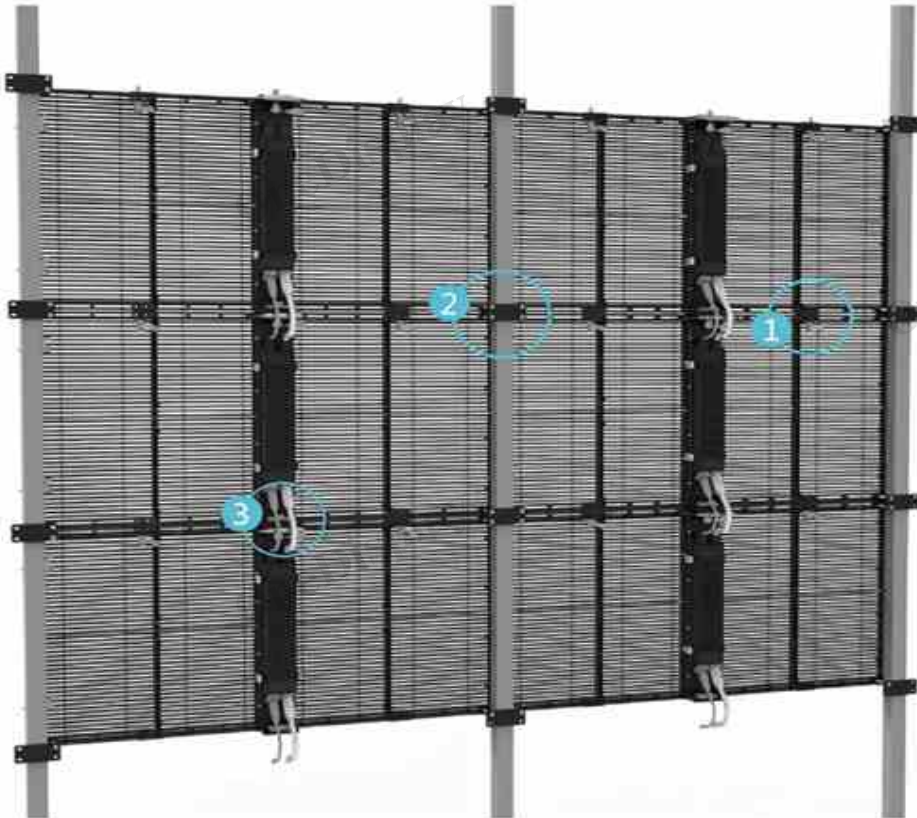
Gluing encapsulation on the LED lamps and strips for defending the collision and preventing water permeant.



Excellent protection

1. Gluing encapsulation, anti-collision, waterproof.
2. Voluntarily evaporation from surface.
3. Anti-collision by severe impaction.
4. No damage/No LED failure from the impact.

Product Installation and maintenance:



Stacking



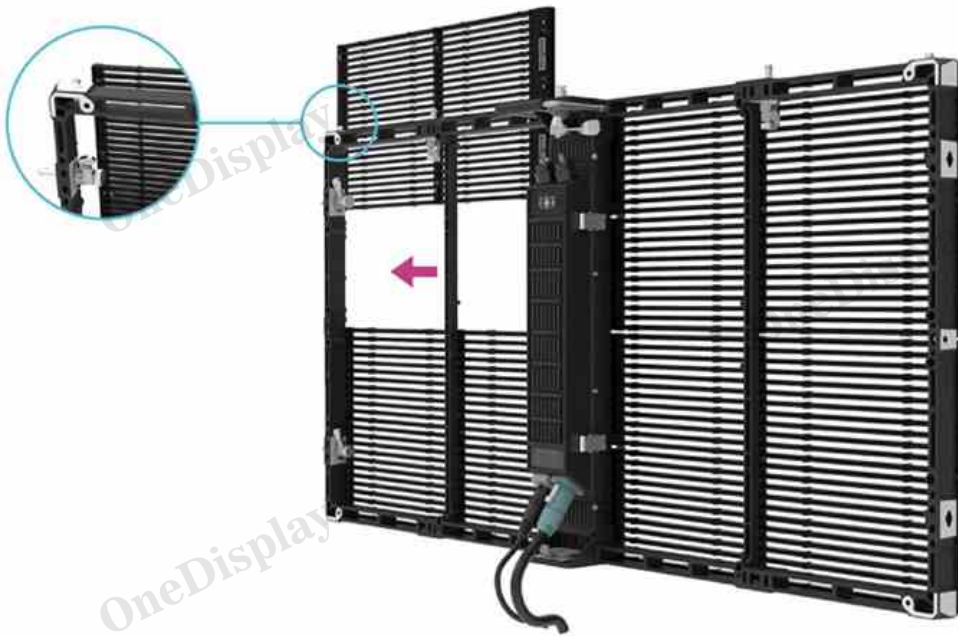
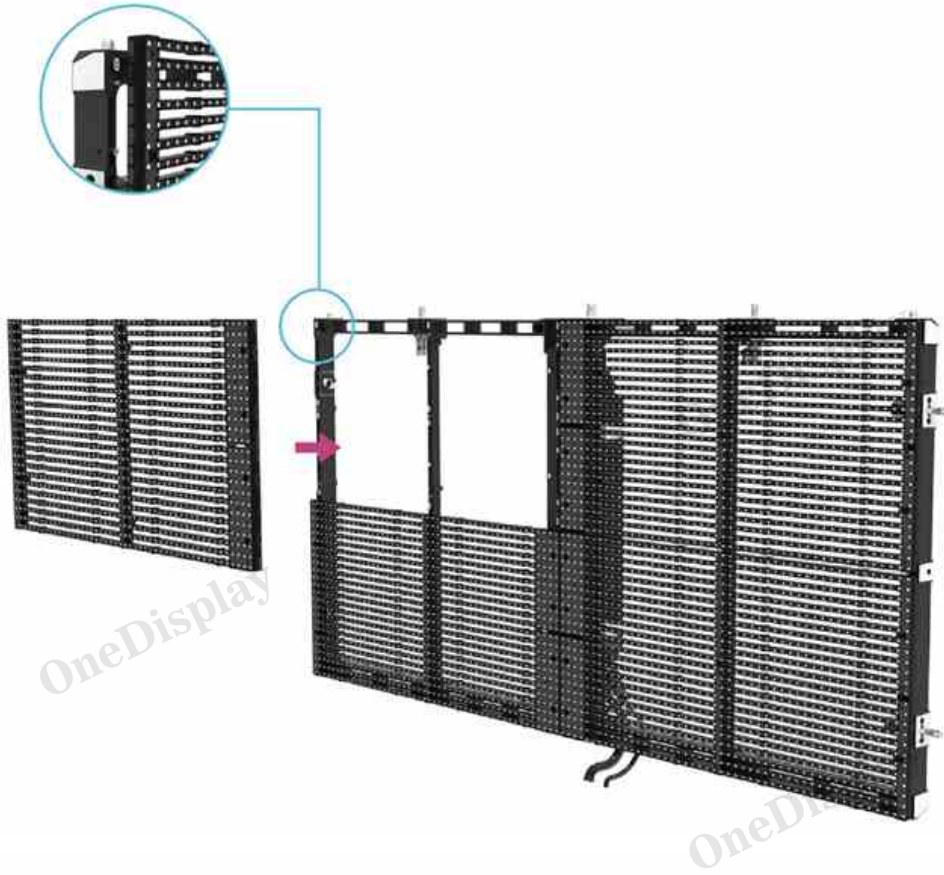
1. Mate lock connection



2. Panels assembling by connectors



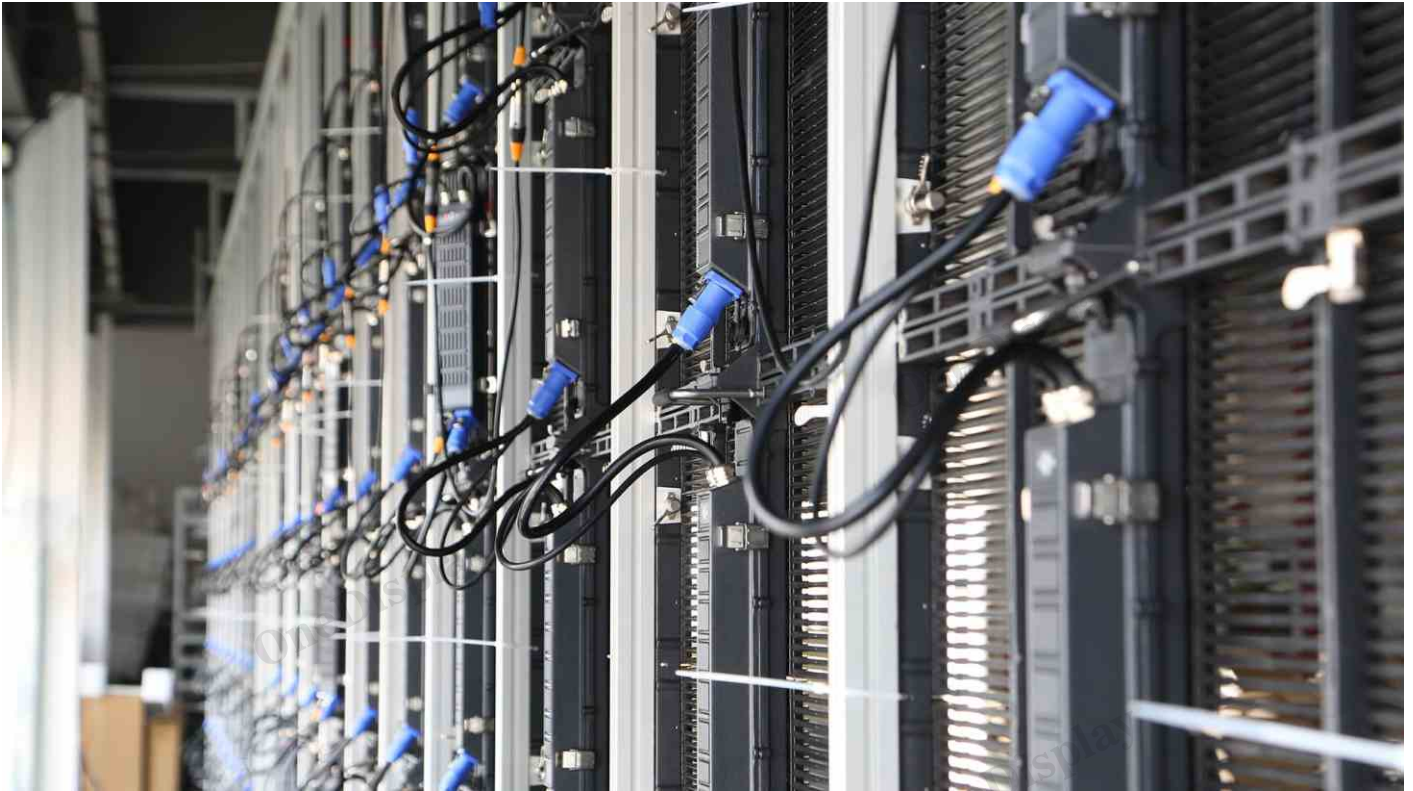
3. Main lock connection



Front and Rear access:

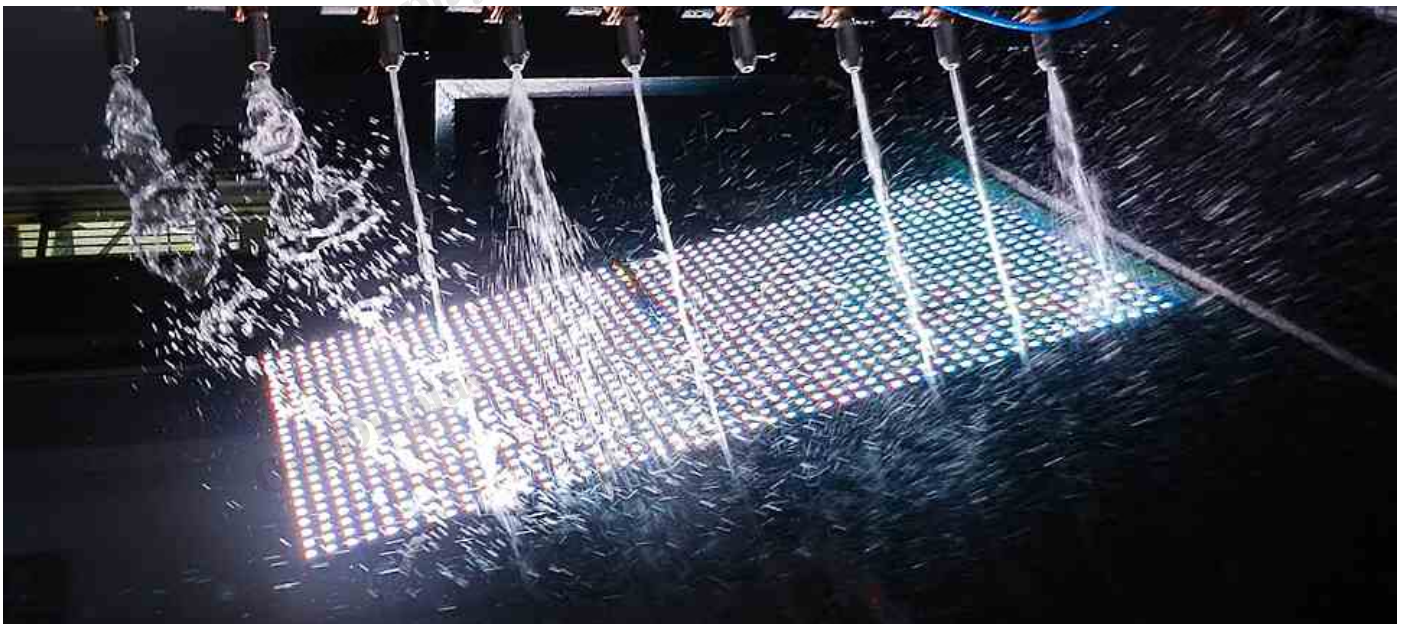
Tough and durable design, only replace the LED strips by the faulty, saving cost maintenance, easy fixing from front and rear.

Outdoor transparent Led Display



Easy and Quick for Installation and Maintenance.

Standardized cast aluminum design with quick locks and connectors for fixed and rental installations. Light weight, ultra –slim, easy for installation and maintenance.



High protective performance

High protective against collision, statics, collision, moisture, dust etc, better insurance for life long usage.



Cases: Wuhan Optics Valley F.C.



Case: BT Tower in London

LED Screen Manufacturer in China



One Display Limited

Email: marketing@onedisplay.net

Office Number: +86 755-29948922

Tel/Whatsapp: +86 136 3278 9913

Address: Building 5A, Huaqiang Idea Park,
GuangMing New District, Shenzhen, 518107, China.